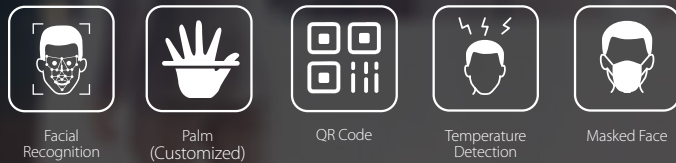


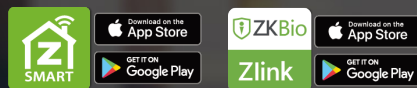


SpeedFace-V5L[QR][TD]

QR Code and Biometric Verification Terminal with Temperature and Mask Detection Technology



Compatible with **ZKBio CVAccess** Compatible with **ZKBio Zlink**



SpeedFace-V5L[QR][TD] is an upgraded version of the SpeedFace-V5L[QR] Visible Light Facial Recognition Terminal, using intelligent engineering facial recognition algorithms and the latest computer vision technology. It supports a multi-factor identity authentication system by using QR Codes and acquired face/palm data for computational template matching. Besides, the terminal offers large capacity and speedy recognition.

SpeedFace-V5L[QR][TD] is powered by the QR Code Scanner that reads barcodes, such as QR codes, PDF417, Data Matrix, MicroPDF417, Aztec, presented on our ZKBio CVAccess Mobile App for T&A/A&C. What's more? The terminal adopts touchless recognition technology and supplementary functions namely temperature detection and masked individual identification, which eliminates hygiene concerns effectively. It is also equipped with an antispoofing algorithm for facial recognition against almost all types of fake photos and videos attack. Importantly, the 3-in-1 palm recognition (Palm Shape, Palm Print and Palm Vein) is performed in 0.35s per hand; the palm data acquired will be compared with a maximum of 3,000 palm templates.

The terminal with temperature and mask detection will be a perfect choice to help reduce the spread of germs and help prevent infections straightly at each access point of any premises and public areas such as hospitals, factories, schools, commercial buildings, stations during the recent global public health issue with its fast and accurate body temperature measurement and masked individual identification functions during facial and palm verification as well as QR Code scanning.

* **NOTE:** Palm recognition function is customized for customers.

Features

- 2D barcodes scanning: QR Code, PDF417, Data Matrix, MicroPDF417, Aztec
- Scramble QR codes with ZKBio CVAccess Mobile App
- Visible Light Facial Recognition
- Better hygiene with touchless biometric authentication, temperature detection and masked individual identification
- Anti-spoofing algorithm against print attack (laser, color and B/W photos), videos attack and 3D mask attack
- Multiple Verification Methods: Face / Palm(Customized) / QR Code / Password

Special Functions

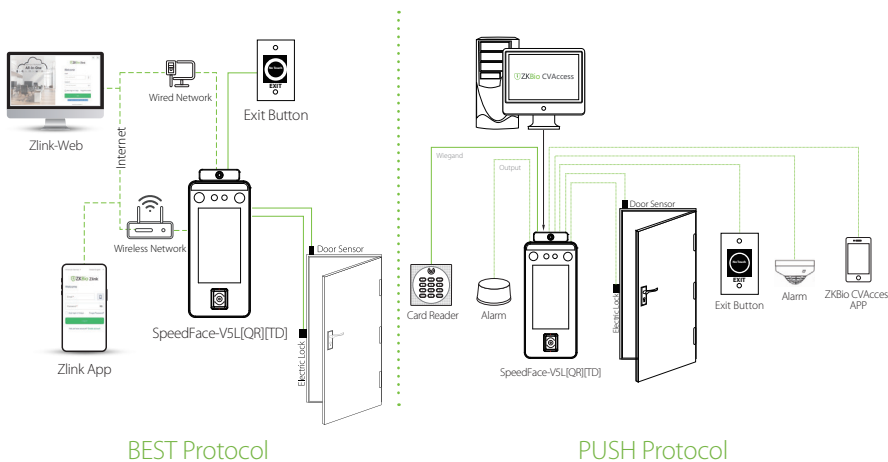
- Temperature Measurement Distance: 30 to 50cm (1 to 1.64ft)
 - Temperature Measurement Accuracy: $\pm 0.3^{\circ}\text{C}$
 - Temperature Measurement Range: 34 to 45°C (93.2 to 113°F)
 - Mask Detection
 - Body Temperature Detection
- * Facial verification for masked individuals will increase FAR. Palm verification for masked individuals is recommended.
* Temperature measurement data is for reference only, not for medical use.
* SpeedFace-V5L[QR][TD] is available for indoor environments without wind or direct sunlight.

Specifications

Display	5-inch Touch Screen
Face Capacity	6,000 (Optional:10,000)
Palm Capacity	3,000
Card Template	10,000
Transactions	200,000
Operation System	Linux
Standard Functions	ADMS, T9 Input, DST, Camera, 9-digit User ID, Access Levels, Groups, Holidays, Anti-passback, Record Query, Tamper Switch Alarm, Multiple Verification Methods, Barcodes Scanning
Hardware	900MHz Dual Core CPU, Memory 1G RAM / 8G Flash, 2MP WDR Low Light Camera, Adjustable Light Brightness LED
Communication	TCP/IP, Wi-Fi (Optional), Wiegand Input / Output, RS485*
QR Sensor	QR Code, PDF417, Data Matrix, MicroPDF417, Aztec
Access Control Interface	3rd Party Electric Lock, Door Sensor, Exit Button, Alarm output, Auxiliary Input
Facial Recognition Speed	≤1s
Biometrics Algorithms	ZKFace 3.9 & ArmaturaPalm (Customized)
Power Supply	DC 12V, 3A
Operating Humidity	10% - 90%
Operating Temperature	16°C ~ 32°C (60.8°F ~ 89.6°F)
Dimensions (W*H*D)	91.93 * 220 * 22.5 (mm)
Supported Softwares	PUSH Protocol: ZKBio CVAccess / ZSmart BEST Protocol: ZKBio Zlink

* Note: RS485 is for RS485 readers.

Configuration



Dimensions (mm)

