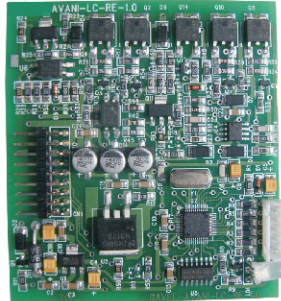


RE-LC

Addressable Loop Card

Product Overview

RE-LC Loop Card for AVANI, intelligent addressable fire alarm control panel. Up to 254 devices can be connected to a single loop card. These loop card can plugged in to slot provided in the motherboard of Main panel (Avani). RE-LC Loop Card is compatible with Addressable Detectors, Manual Call Points, Modules etc., The status of the loop shown by dual colour LED.



Features:

- Loop wise device test .
- Loop card can programmable as Class A, Style 5,6 or 7 and Class B Style 4 wiring.
- Maximum 254 devices (any combination) per loop.
- Auto learning facility.

Electrical Specification:

Signaling Line Circuit

No Devices per loop	: 254
Loop resistance	: 40 Ω (Max.).
Loop capacitance	: 0.6 μ f (Max.).
Loop Current	: 300mA (Max.).
Operating Voltage	: 24VDC
Operating Temperature	: 0 - 49° C / 32-120° F.
Relative Humidity	: 93 \pm 2% RH (non-condensing) at 32 \pm 2° C / 90 \pm 3° F.

Compatible Device:

MODEL	Description
Avani	Addressable Fire Alarm Control Panel

Ordering Information:

MODEL	Description
RE-LC	Addressable Loop Card

India:

RAVEL ELECTRONICS PVT LTD.,
(An ISO 9001 Company)
150A, Electronics Industrial Estate, Perungudi, Chennai - 96 .India.
E-Mail: marketing@ravelfire.com; Web : www.ravelfire.com

United Kingdom:

RAVEL ELECTRONICS LTD.,
Unit 11, Chancel Industrial Estate, Newhall street,
Willenhall WV13 1NX, West Midlands, United Kingdom.
E-mail: info@ravelfire.co.uk ;Web: www.ravelfire.co.uk